



*Magical walk-through indoor exhibits celebrate Christmas all year long!*



# NATIONAL CHRISTMAS CENTER FAMILY ATTRACTION AND MUSEUM

15 main galleries and numerous ever-changing smaller exhibits bring the holiday to life for guests of all ages

*National Christmas Center is located on Route 30, Paradise, in Lancaster County, Pennsylvania. Discover the whimsy and fantasy, the magic and memories, the history and traditions of Christmas at National Christmas Center!*

*Lancaster County, Pennsylvania*



We are approximately 6 miles from Sight & Sound Millennium Theatre, American Music Theatre, and Rockvale Square Outlets in Lancaster, PA and four miles from Kitchen Kettle Village, Intercourse, PA.

- \_\_\_ Special tour pricing offered for groups of 20 or more
- \_\_\_ Open 7 days a week, 10 am - 6 pm, year-round offering flexible scheduling options to accommodate your schedule
- \_\_\_ Wheelchair accessible; seating available throughout
- \_\_\_ Tours are self-guided; allow a 90-minute stay
- \_\_\_ Offering freshly-prepared boxed "meals to go" by prior arrangement
- \_\_\_ Totally revamped gift shop - now selling select Christmas antiques as well as new merchandise

Ask about our **suggested Lancaster County tour itineraries**, including themed tours. See website for more details:

[http://www.nationalchristmascenter.com/html/groups\\_ideas\\_printable.htm](http://www.nationalchristmascenter.com/html/groups_ideas_printable.htm)

**NEW for 2009 -**  
Christmas in July Outdoor Festival, July 18, 2009 and "O Holy Night" an antique 3/4 life-size Nativity



## 2009 Group Rates

Adults and Seniors - \$9.25  
Children ages 3-12 - \$4.75  
Escort and Coach Driver admitted free with groups of 20+



NOTES: \_\_\_\_\_  
\_\_\_\_\_  
\_\_\_\_\_

3427 Lincoln Highway East, Paradise PA 17562  
phone (717) 442-7950, fax (717) 442-9304  
ncc@nationalchristmascenter.com

### SELF-GUIDED, INDOOR TOURS

year-round comfort, regardless of the weather outside; just pull the coach to the front steps; staff will greet each group and give an introduction

### SENIOR FRIENDLY

seating available throughout museum, museum is on one floor (no stairs), wheelchair accessible, a stroll down memory lane for all!

### OPEN YEAR-ROUND FOR GROUPS OF 20+

Celebrate Christmas all year long! Great for mystery tours, church groups, Christmas in July, or as an add-on to one of the many terrific shows in the area.

### FLEXIBLE HOURS OF OPERATION FOR GROUPS

we can sometimes open early or stay open late to accommodate your group's schedule, with advance notice (additional \$35 surcharge fee)

### ON-SITE AMENITIES

motorcoach parking, hot and cold drinks and snacks for sale, gift shop, information packet available for coach drivers (directions, local service stations, dump stations, closest medical facilities, nearby ATM's, grocery stores, pharmacies, etc.)

### COMP POLICY

one escort and coach driver admitted free with a group of 20 or more

### BOXED LUNCHES TO-GO

Freshly-prepared boxed lunches "to go" for your group are available by pre-order, call or see our web site for details

### DEPOSIT INFORMATION

\$50 DEPOSIT REQUIRED within 2 weeks of the day you call to book your tour

### CANCELLATION POLICY

one week's notice required for cancellations, excluding weather emergencies - deposit and surcharge (if applicable) are refundable if the tour is cancelled at least one week prior to the scheduled tour date

### SPECIAL SERVICES OFFERED TO GROUPS

"Evening at the Christmas Center" and "Taste of Christmas" programs, and lectures on Christmas topics of interest (on-site or at group's lodging or dining facilities) are available for an additional fee, with advance notice and pending availability

### ITINERARY SUGGESTIONS AVAILABLE

see our themed tour suggestions at  
[http://www.nationalchristmascenter.com/html/groups\\_ideas\\_printable.htm](http://www.nationalchristmascenter.com/html/groups_ideas_printable.htm)

### EDUCATIONAL MATERIALS FOR YOUTH

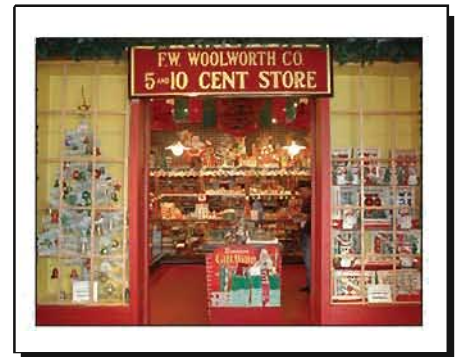
study aids are available by prior arrangement and may be used as an introduction to tours or as follow-up activities - see website for details



*celebrate Christmas history and traditions*



*enjoy Toyland's magical train mountain*



*window-shop in a 1950's Woolworth's 5&10*



*tour TudorTowne animated story book village*

**[www.NationalChristmasCenter.com](http://www.NationalChristmasCenter.com)**

3427 Lincoln Highway (Route 30), Paradise, Lancaster County, Pennsylvania 17562  
phone (717) 442-7950, fax (717) 442-9304 - [ncc@nationalchristmascenter.com](mailto:ncc@nationalchristmascenter.com)